

Shaft

Wall Thickness	5.7 mm (0.226")
Round HSS Outside Diameter	101.6 mm (4")
Available Standard Lengths	2.1 m (7'-0") / 3.2 m (10'-6")

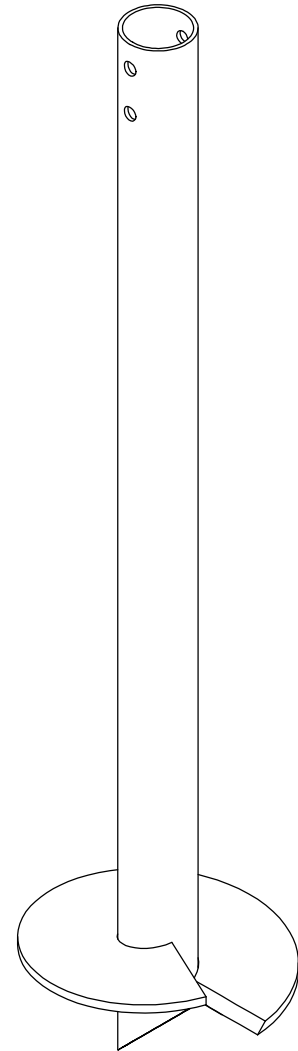
Load Specifications

Max. Allowable Capacity	200 kN (45,000 lb)
-------------------------	--------------------

Technical Specifications

Commonly Used Structure*	Heavy Residential Light to Medium Commercial Industrial
Standard Steel	ASTM A500 Grade C Fy=350 MPa min (51 ksi)
Black Steel Design Life	Min 50 years
Coating	Galvanized or Black Steel
Galvanization Compliance	ASTM A123/A123M/A123M
Additional Corrosion Protection	Cathodic Protection System available

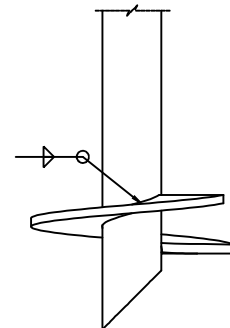
* Refer to the selection table on p.8.



Helix

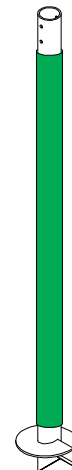
Pitch	76.2 mm (3") / 127 mm (5")
Thickness	12.7 mm (0.5")
Standard Steel	CSA G40.21-300W Fy=300 MPa min (44 ksi)
Coating	Galvanized or Black Steel
Multiple Welded Helix	Available
Helix Size*	203 mm (8") to 610 mm (24")

* Other sizes available upon request.

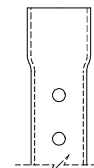
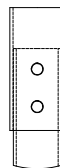
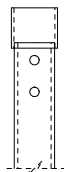


Sleeve (Available)

Function Utility	Protection against soil movements
Wall Thickness	1.6 mm (1/16")
Round HSS Outside Diameter	± 108 mm (± 4.25")
Length	± 1.67 m (± 66")
Weight	± 1.09 kg (± 2.4 lb)
Material	HDPE
Color	Green



Outside Couplings



	Regular	Reinforced	Expanded
Assembly	Welded	Welded	-
Wall Thickness	6 mm (0.237")	6 mm (0.237")	5.1 mm (0.201")
Round HSS Outside Diameter	114 mm (4.5")	114 mm (4.5")	114 mm (4.5")
Standard Steel	ASTM A500 Grade C Fy=350 MPa min (51 ksi)	ASTM A500 Grade C Fy=350 MPa min (51 ksi)	ASTM A500 Grade C Fy=350 MPa min (51 ksi)
Length*	88.9 mm (3.5")	222.3 mm (8.75")	68.5 mm (2.7")

* Length of outside coupling welded on-site.