

## Shaft

Wall Thickness	3.9 mm (0.154")
Round HSS Outside Diameter	60.3 mm (2.4")
Available Standard Lengths	2.1 m (7'-0") / 3.2 m (10'-6")

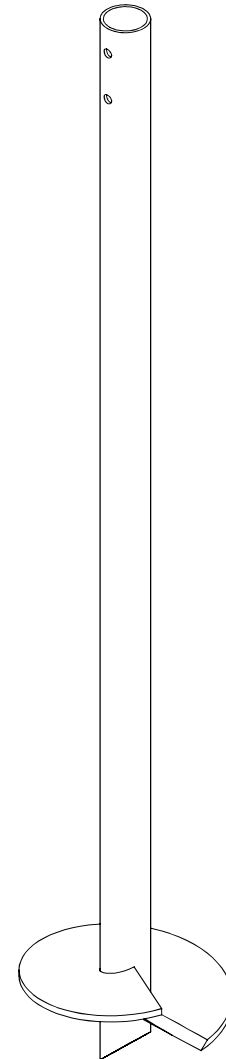
## Load Specifications

Max. Allowable Capacity	49 kN (11,000 lb)
-------------------------	-------------------

## Technical Specifications

Commonly Used Structure*	Medium Residential Light Commercial
Code Evaluation	Listed per CCMC (13059-R)
Standard Steel	ASTM A500 Grade C Fy=350 MPa min (51 ksi)
Black Steel Design Life	Min 50 years
Coating	Galvanized or Black Steel
Galvanization Compliance	ASTM A123/A123M/A123M
Additional Corrosion Protection	Cathodic Protection System available

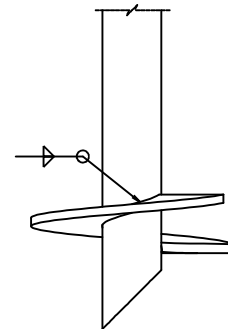
\* Refer to the selection table on p.8.



## Helix

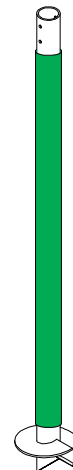
Pitch	76.2 mm (3") / 127 mm (5")
Thickness	9.5 mm (0.375")
Standard Steel	CSA G40.21-300W Fy=300 MPa min (44 ksi)
Coating	Galvanized or Black Steel
Multiple Welded Helix	Available
Helix Size*	152 mm (6") to 406 mm (16")

\* Other sizes available upon request.

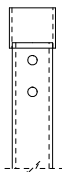


## Sleeve (Available)

Function Utility	Protection against soil movements
Wall Thickness	1.6 mm (1/16")
Round HSS Outside Diameter	± 66.7 mm (± 2.625")
Length	± 1.67 m (± 66")
Weight	± 0.32 kg (± 0.7 lb)
Material	HDPE
Color	Green



## Outside Couplings



### Regular

Assembly	Welded
Wall Thickness	5 mm (0.203")
Round HSS Outside Diameter	73 mm (2.875")
Standard Steel	ASTM A500 Grade C Fy=350 MPa min (51 ksi)
Length*	31.8 mm (1.25")

\* Length of outside coupling welded on-site.